



PANAM
DETERMINED TO BE DIFFERENT

ABOUT PANAM

The inception of Panam dates back to 2003. Panam is one of Pune's leading financial intermediary making its presence felt in all major financial service segments.



- Nearly two decades of legacy.
- Team Strength of over 15 experts.
- 1500+ clients – NRI's, HNIs, Retail Individuals and Corporates

INFRASTRUCTURE



- ❖ Various Online Transaction Platforms.
- ❖ Meticulous and highly experienced staff.
- ❖ Our offices are equipped with high-tech systems and cutting edge technologies.
- ❖ We have a dedicated team for each vertical of services offered.

*Connecting you to the opportunities
in the Financial Market*

Direct
Equity

Insurance

Mutual
Funds

Bonds

Fixed
Deposits

P2P
Lending

Depository

Advisory
& PMS



SQUIRREL IDEAS

- Short term ideas with predetermined entry and exit levels.
- Ideal for minimum ticket size 5 Lacs.

✓ **2-4 high conviction delivery based ideas on the basis of charts and momentum.**

✓ **Time Frame 4 to 6 Weeks.**

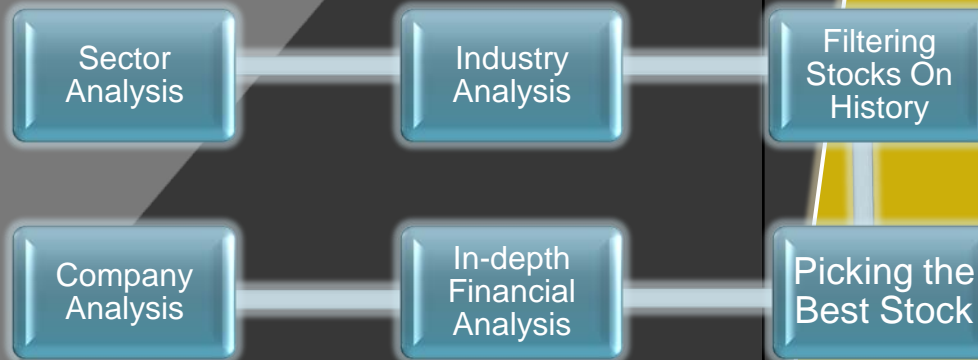
**AIM TO
GENERATE UP
TO 10% RETURNS**

Informed trader can with proper margin and m2m provision opt for futures, options, pair trades, long & short trades.

- Exit upon achieving target or when stop loss is triggered or due to change in view.
- All ideas carry market risk with chance of high capital loss

PMS - Advisory

- INVESTMENT OBJECTIVE
Deliver returns by investing in a concentrated equity portfolio of 15-20 good quality businesses with growth potential.
- INVESTMENT STRATEGIES
Strategies that are capable of controlling the fear and greed element of an investor.
- RESEARCH PROCESS



Portfolio construct to deliver 15% - 20% earnings growth that should reflect in similar capital appreciation.



Protect From Volatility

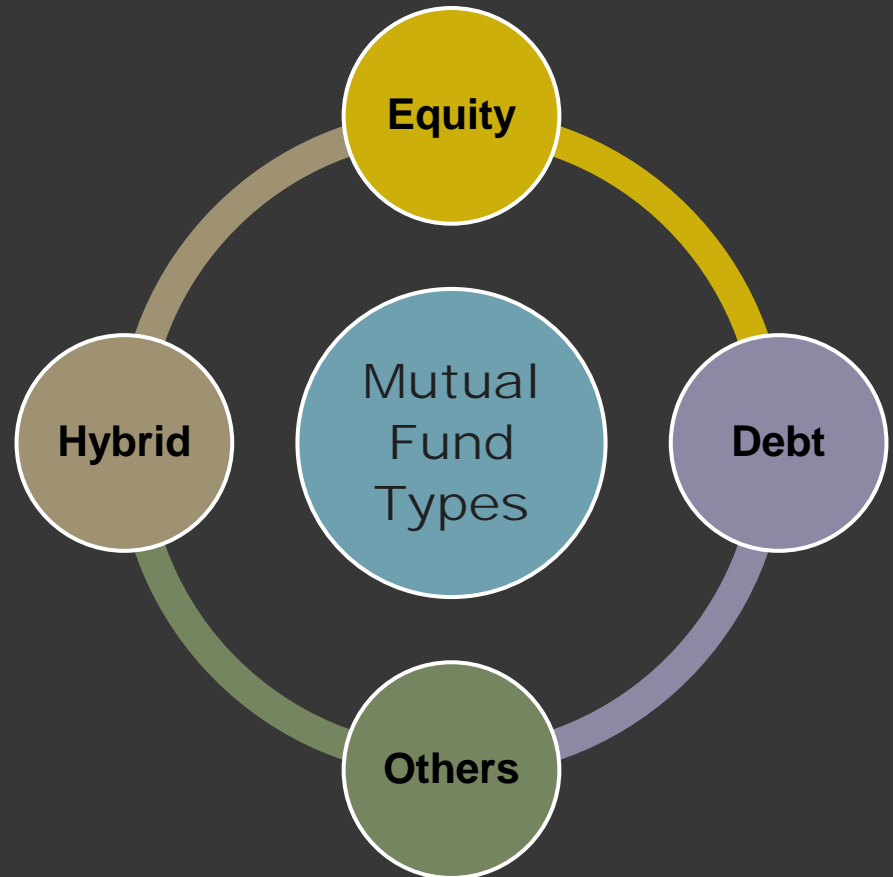


Consistent Growth

Mutual Funds : Long Term Compounders

Tie-up with all Asset Management Companies (AMCs) . All Mutual Fund Schemes are being recommended following below process.

- Asset Allocation
- Diversification
- Periodic Rebalancing
- Time Horizon
- Risk Tolerance
- Liquidity Requirement



KEY PILLARS OF INVESTMENT PHILOSOPHY

Credit
Assessment

Diversification
& Risk
Management

Income
Generation

Profitability &
Consistent
Growth



Capital
Preservation



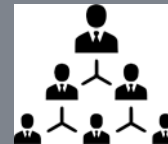
PANAM
DETERMINED TO BE DIFFERENT

KEY PILLARS OF INVESTMENT PHILOSOPHY

- **Growth oriented Business.**
- **Turn around Opportunities.**
- **Compounders.**



Businesses having potential to grow consistently at high growth rates over long period of time creating a strong wealth.



Managements that have and demonstrate ability to go ahead of industry in Ups & Downs without sacrificing quality of financials.



Why Us?

- ❑ **High level of personal attention, research and in-depth market capabilities.**
- ❑ **Dedicated team for trading, research, operation and compliance.**
- ❑ **Quick solution to the most complex investment challenges with process driven execution.**
- ❑ **Investment strategies recommended based on risk profile and goals.**

Our Team

JAIDEEP PAREKH

Founder & CEO

DEVANG PAREKH

Head - Equity

ABHIJEET KADAM

Head – Mutual Fund & Insurance

SNEHAL SHELKE

Head – Operation MF

UTSAV PAREKH

Technical Analyst

RUSHIKESH LOHEKAR

Dealer Equity

Our Core Values

- ✓ Accountability
- ✓ Ownership
- ✓ Credibility
- ✓ Integrity
- ✓ Commitment
- ✓ Ethical



www.panamsharesandservices.com



info@panamin.com



(020) 2544 2266 / 9372772828



15, Nirmity Eminence, Gulwani Maharaj
Road, Erandawane, Pune 411004

DETERMINED TO BE DIFFERENT

Thank you...

Disclaimer: We are intermediary and not a SEBI registered advisor.
All investment ideas and trading calls are based on our principals recommendations.



PANAM
DETERMINED TO BE DIFFERENT

www.panamsharesandservices.com | Follow us on  